



FPPRO

Progettazione e calcolo dei serramenti

Door/window design and calculation

IT - EN

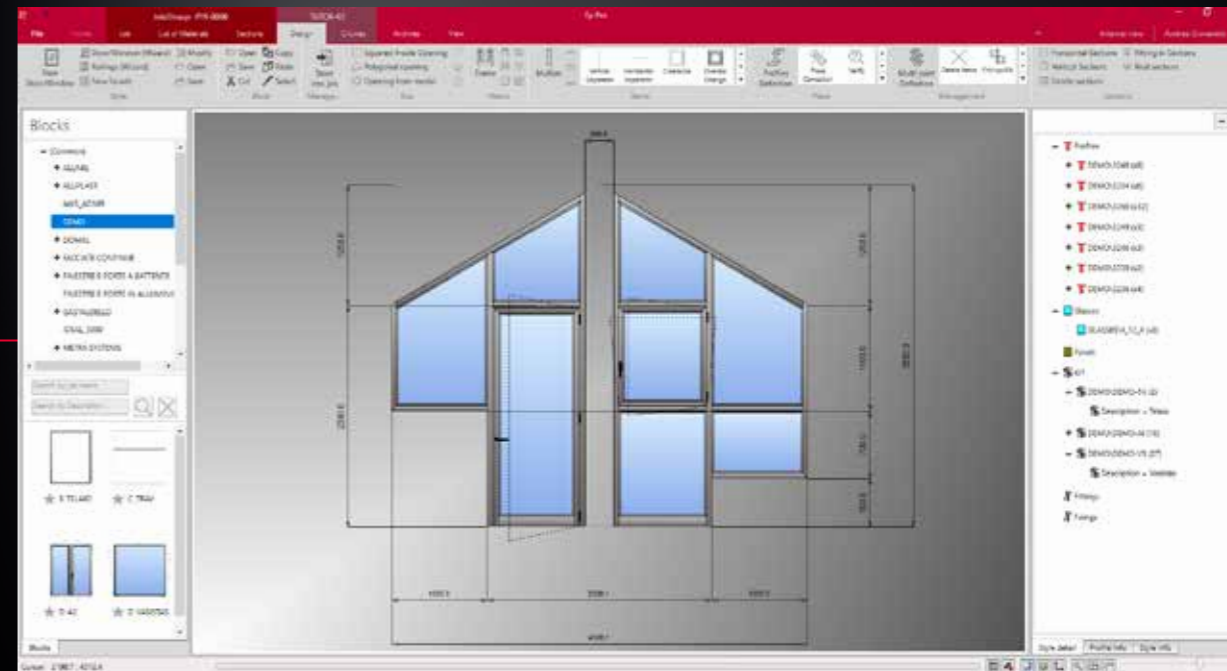


FP PRO

Progettazione e calcolo dei serramenti - *Door/window design and calculation*

FP PRO è il software principale di FP SUITE in quanto include le funzioni basilari per ogni azienda serramentistica: progettazione del serramento, definizione e calcolo delle commesse, preventivazione analitica, gestione degli acquisti, generazione delle liste di lavoro per l'officina, gestione della marcatura CE. E' disponibile in 5 versioni per adattarsi ad aziende di ogni dimensione. L'utilizzo, molto semplice, e' caratterizzato da un approccio completamente grafico, con la visualizzazione reale di profili, nodi, sezioni, tipologie in 3D. Può funzionare in rete con archivi condivisi su database SQL.

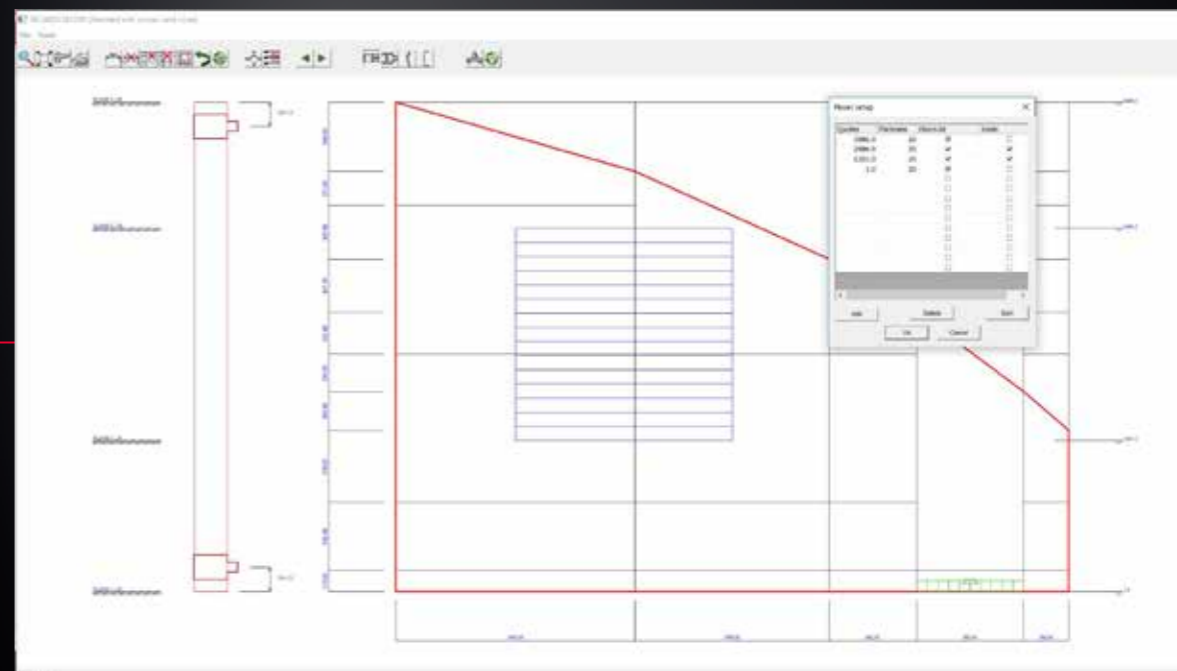
FP PRO is the main FP SUITE program since it includes the basic functions used by all door/window makers: door/window design, job definition and calculation, analytical estimate, purchasing management, generation of workshop work lists, heat transmission calculation, CE mark management. It comes in 5 versions and is suitable for companies of any size. It is easy to use and employs a user-friendly graphical interface displaying real profiles, multi-joints, sections, 3D styles. It can operate in a network where files are shared over an SQL database.



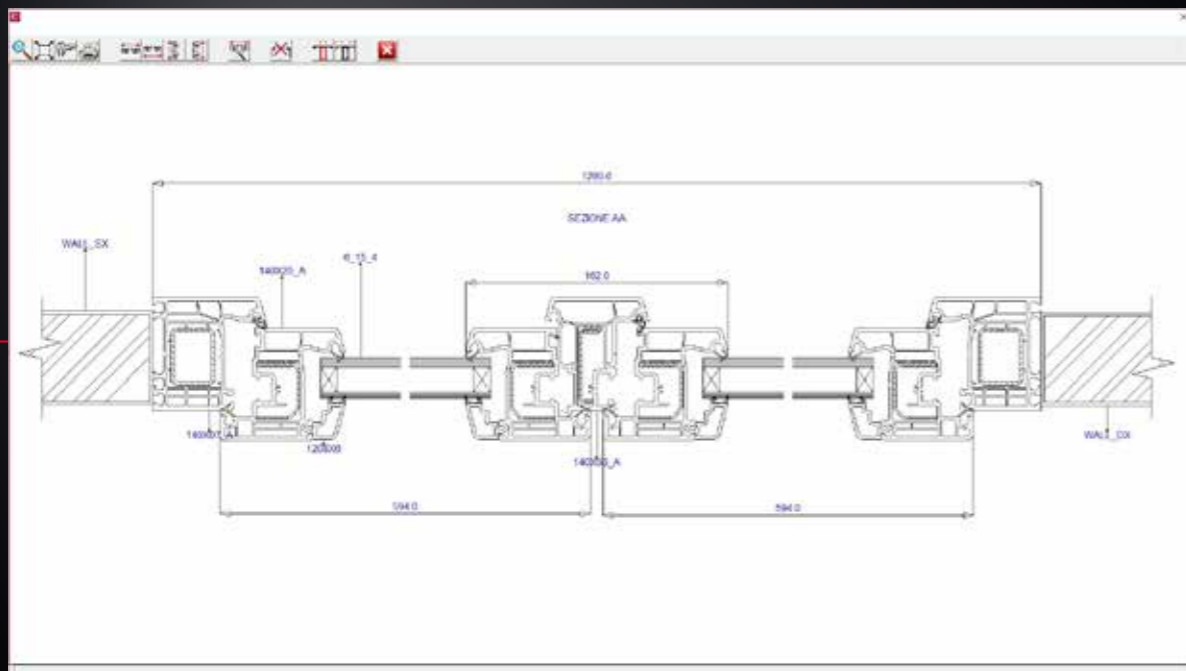
Progettazione di tipologie rettangolari, fuori squadra, ad arco
Designs rectangular styles, arched styles and styles with intermediate angles



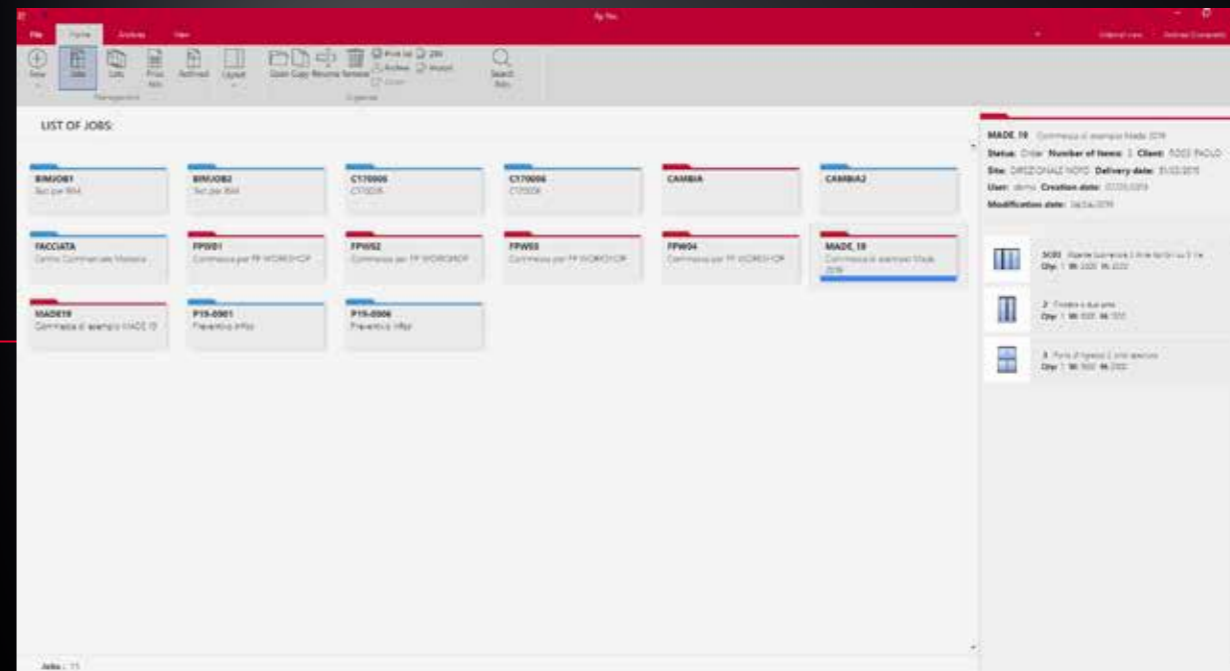
Progettazione di battenti, scorrevoli, persiane, portoni a libro, monoblocchi
Designs casements, sliding windows, shutters, sliding-folding doors, window assemblies



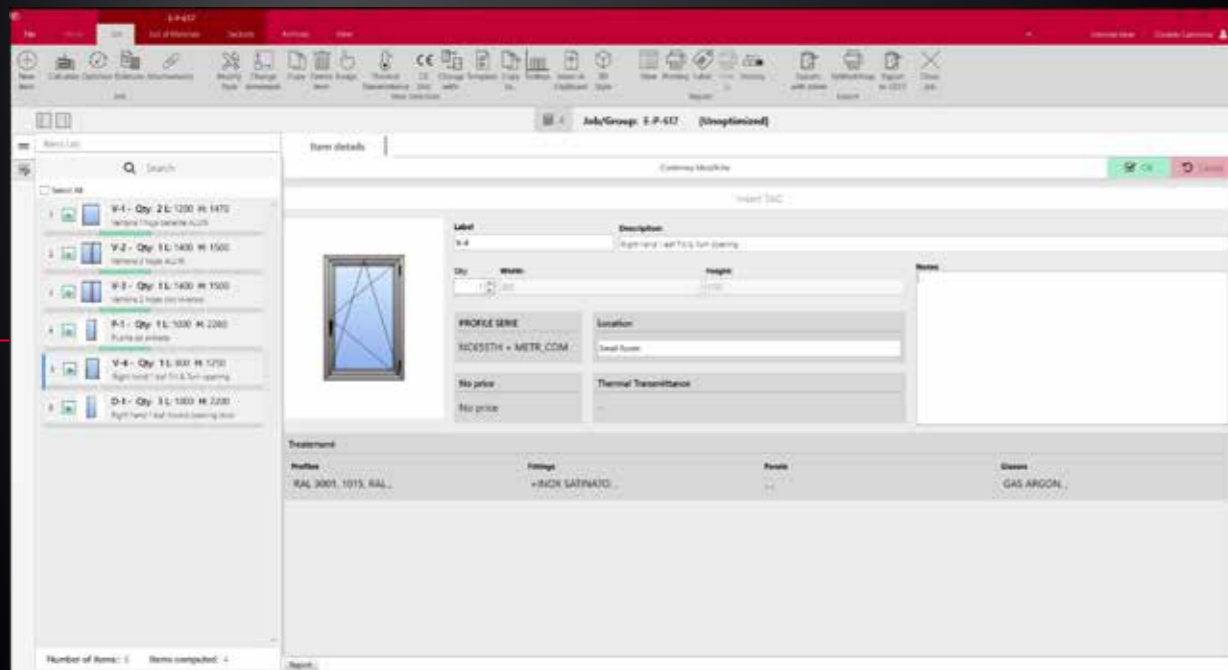
Progettazione di facciate piane tradizionali, semistrutturali, strutturali
Designs traditional, semi-structural and structural flat curtain wall



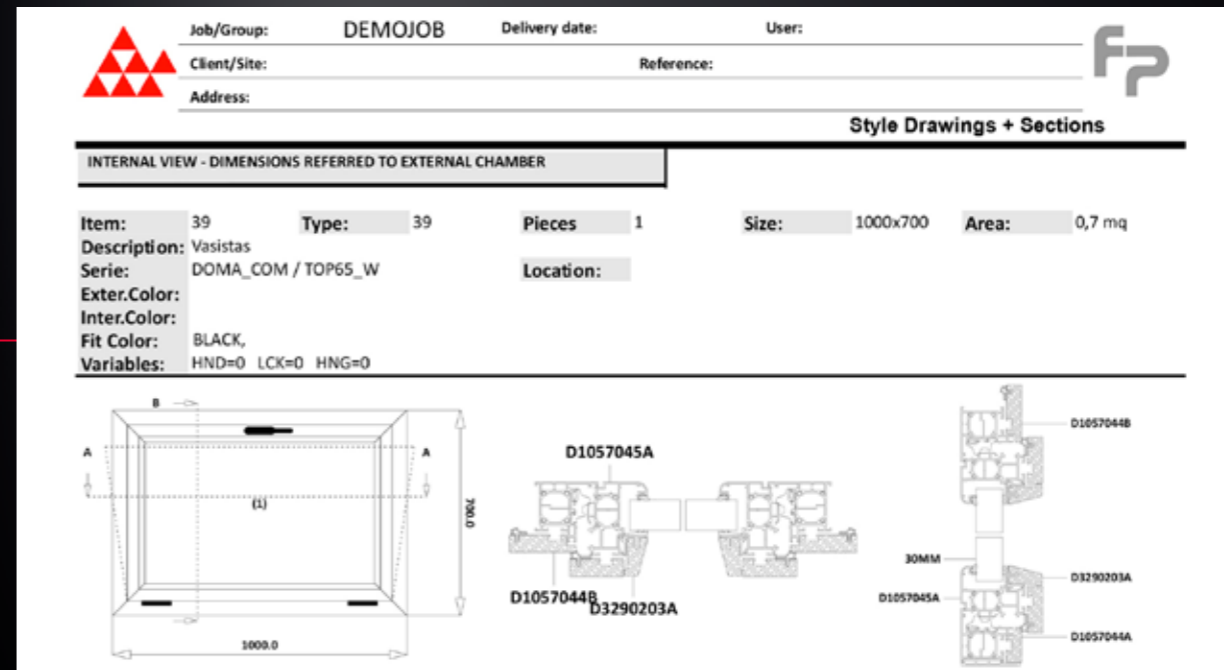
Utilizzo di profili in alluminio, legno-alluminio PVC, ferro
Uses profiles in aluminum, wood-aluminum, PVC, iron




Gestione dell'archivio di commesse e lotti
Manages the archive of jobs and lots



Definizione delle caratteristiche della commessa
Defines the characteristics of the job




Rappresentazione grafica di profili, nodi, sezioni quotate
Graphically presents dimensioned profiles, multi-joints and sections

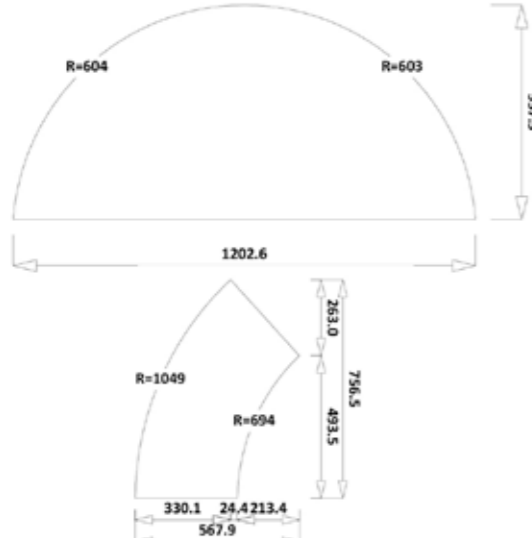


Job/Group: E-P-617 Delivery date: _____ User: _____

Client/Site: _____

Description: Glasses list






ID	007.0040.00.VET.H
Quantity	1
Dimension (WxH)	1203 x 558
Perimeter	3,01 m
mq	0,5 mq
Type	7
Item:	7
Unit weight\Total weight	10,3 kg\10,3 kg

ID	007.0069.00.VET.H
Quantity	1
Dimension (WxH)	568 x 756
Perimeter	2,11 m
mq	0,2 mq
Type	7
Item:	7
Unit weight\Total weight	5 kg\5 kg


Calcolo della distinta materiale per profili, accessori, vetri, pannelli
Calculates the materials lists for profiles, fittings, glazing, panels





Job/Group: NEWTOWE Delivery date: 20/03/2019 User: _____



Client/Site: Demo

Description: City Mall

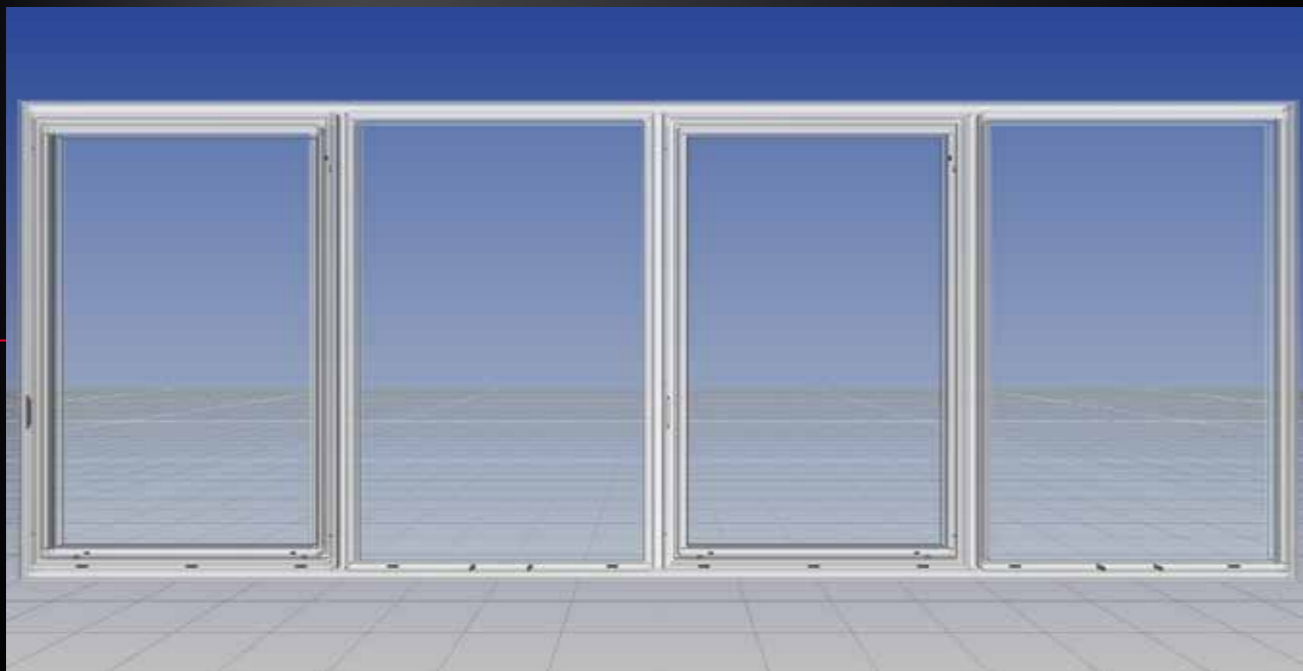


Bars Optimization Report

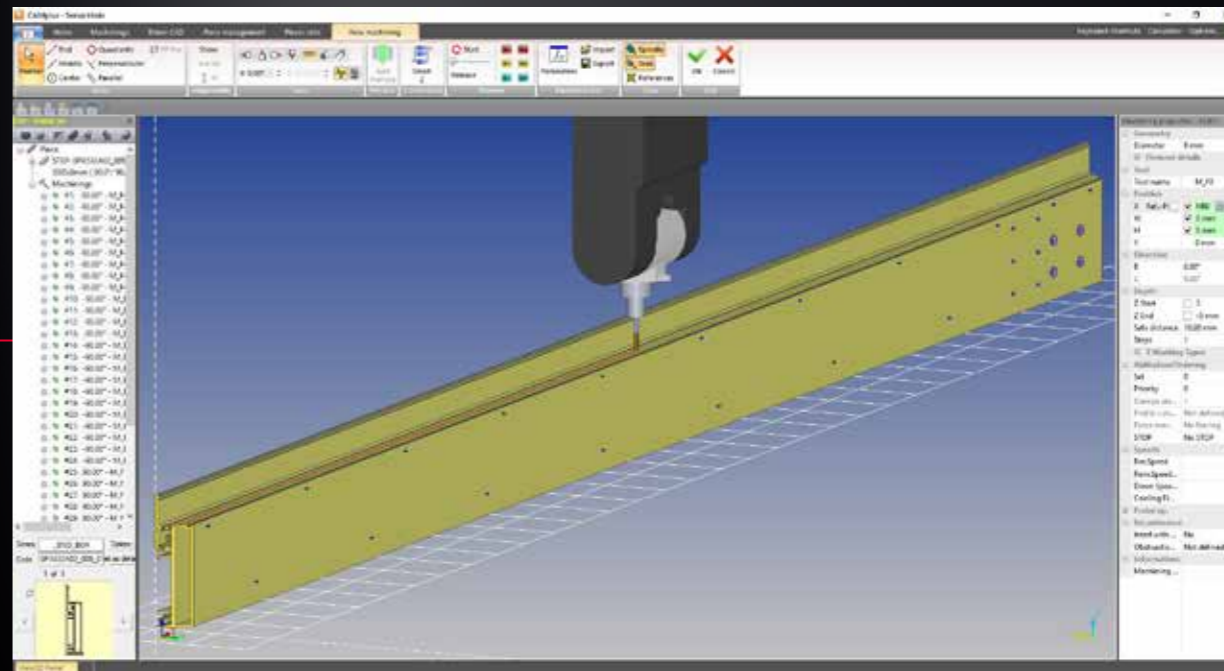
	Serie: NC65STH	Code: NC7906	Bars: 2 x 6500
	Treatment: RAL 5010		
	Description: Door sash		
	Total length: 13 m	Total Weight: 25,9 kg	
	Waste: 4,7 kg	Stock Code:	

	Serie: NC65STH	Code: NC7909	Bars: 1 x 6500
	Treatment: RAL 5010		
	Description: Door sash		
	Total length: 6,5 m	Total Weight: 13,4 kg	
	Waste: 7,4 kg	Stock Code:	


Ottimizzazione di barre, gestione di spezzoni e multibarra, ricerca della lunghezza ideale
Optimises bars, pieces and multi-bar management and searches for the ideal bar length



Visualizzazione in 3D della struttura con le lavorazioni
3D display of the styles with the machining operations



Generazione liste di lavoro per troncatrici, centri di lavoro, saldatrici, pulitrici
Generates work lists for the cutting-off machines, machining centres and welding/corner cleaning machines



Item Costs P-1 - Pieces

Type	P-1		
Style	Main entrance door		
Num. items	10		
Profiles	NC65STH,METR_COM		
Dimension	1200x2300	Area sm	2,7600
Ext. surf. treat.	RAL 10X		
Int. surf. treat.	RAL 10X		
Fitting treat.	+ORO BRILLANTE +AL 9010 +NERO +INOX SATINATO		
Glasses	6_16_6 (934 x 851) x 10_6_16_6 (934 x 1056) x 10		
Unitary cost	3.383,58		
sm cost	1.225,9338		
Total cost	33.835,77		

Profiles Im		Raw		Treatment				
Art-Nr	Description	Surf. treatment	Length	Im Cost	Cost	Un. Cost	Cost	
NC13585	Glazing bead	RAL 10X	75,02	4,86	0	129,07	2 /kg.	18,80
NC7563	Jamb / Transom	RAL 10X	9,50	47,15	0	1.323,17	2 /kg.	165,80
NC7693	Base transom	RAL 10X	9,50	42,65	0	1.073,33	2 /kg.	133,33
NC7906	Door sash	RAL 10X	55,28	41,06	0	4.521,45	2 /kg.	438,71
NC7915	Drip	RAL 10X	10,96	4,18	0	13,84	2 /kg.	2,00
NC7918	Underbase transom	RAL 10X	10,96	14,49	0	119,59	2 /kg.	12,43
NC7923	Door sill	ARGENTO	10,48	18,20	0	169,75	1 /kg.	8,30
NC7929	Door frame	RAL 10X	58,00	31,03	0	3.280,93	2 /kg.	385,51
					10.631,13			1.164,88

Gestione dei costi riguardanti il materiale, i tempi di manodopera, le spese generali
Manages the costs for materials, processing times, general expenses



Date 04/02/2019
Proposal No. J-109-01



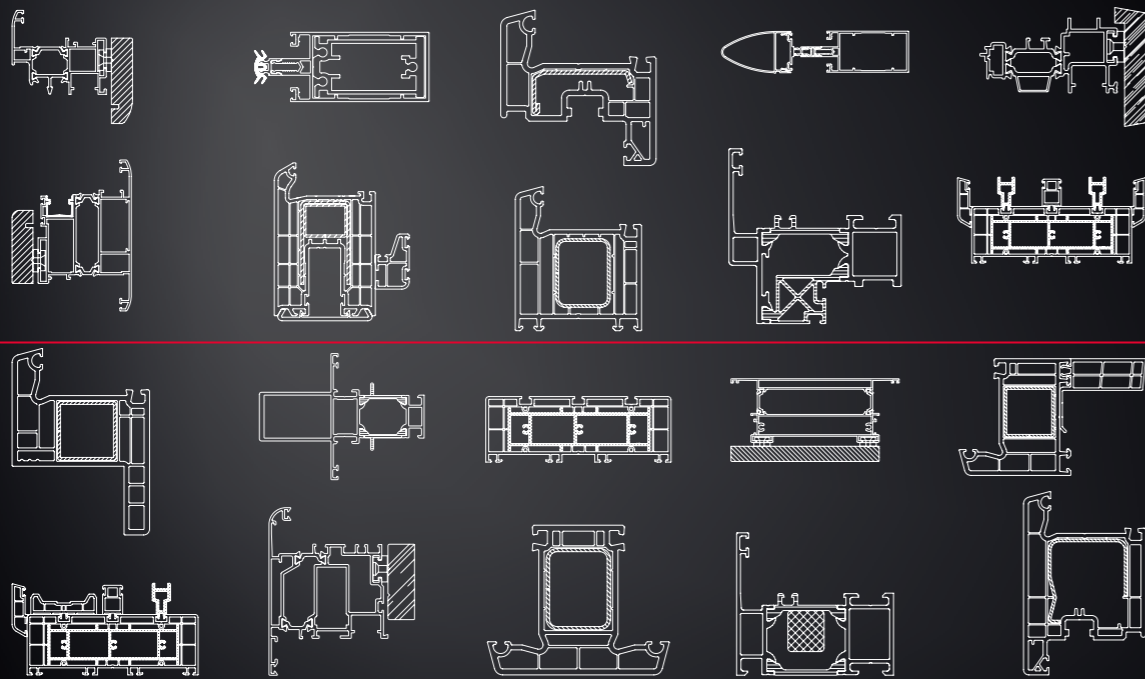
ITEM	QUANTITY	DESCRIPTION TYPE	EUR	UNIT PRICE
1	10	Main entrance door		3.383,58
		L x H: 1200 x 2300 (mm) SPECIFICATIONS: - Profiles series: NC65STH - Glasses: Double glazing 6/16/6 Total 28mm - Profile treatment: RAL 10X - Fitting treatment: +ORO BRILLANTE +AL 9010 +NERO +INOX SATINATO		
TOTAL UNIT PRICE			EUR	3.383,58
TOTAL PRICE			EUR	33.835,77
2	20	1&1 single sash window		1.000,32
		L x H: 800 x 1250 (mm) SPECIFICATIONS: - Profiles series: NC65STH - Glasses: Multi camera vs 33+16+6 etc. - Profile treatment: RAL 10X - Fitting treatment: +NERO +INOX SATINATO +AL 9010		
TOTAL UNIT PRICE			EUR	1.000,32
TOTAL PRICE			EUR	20.006,48
3	15	Double 1&1 window		1.610,29
		L x H: 1250 x 1250 (mm) SPECIFICATIONS: - Profiles series: NC65STH - Glasses: Multi camera vs 33+16+6 etc. - Profile treatment: RAL 10X - Fitting treatment: +NERO +INOX SATINATO +AL 9010		
TOTAL UNIT PRICE			EUR	1.610,29
TOTAL PRICE			EUR	24.154,31

Calcolo del preventivo analitico, da progetto, con stampa personalizzabile
Calculates analytical estimates for projects, producing user-customizable printouts

H (mm)	W (mm)	1000	1100	1200	1300	1400	1500	1600	1700	1800
2150	1100	194,750	194,750	194,750	194,750	194,750	194,750	194,750	194,750	194,750
2150	1200	194,750	194,750	194,750	194,750	194,750	194,750	194,750	194,750	194,750
2150	1300	194,750	194,750	194,750	194,750	194,750	194,750	194,750	194,750	194,750
2150	1400	194,750	194,750	194,750	194,750	194,750	194,750	194,750	194,750	194,750
2150	1500	194,750	194,750	194,750	194,750	194,750	194,750	194,750	194,750	194,750
2150	1600	194,750	194,750	194,750	194,750	194,750	194,750	194,750	194,750	194,750
2150	1700	194,750	194,750	194,750	194,750	194,750	194,750	194,750	194,750	194,750
2150	1800	194,750	194,750	194,750	194,750	194,750	194,750	194,750	194,750	194,750

Calcolo dei prezzi a griglia con collegamento a FP DEALER
Calculates the price grid and connects to FP DEALER

Gestione marcatura CE e calcolo trasmittanza termica
Handles CE marking and calculates heat transmission



Accesso ad un archivio di 2000 serie profilo
 Access to an archive of 2000 profile series

VERSIONI DISPONIBILI AVAILABLE VERSIONS

START

Progettazione serramento rettangolare, calcolo distinta materiale, preventivazione analitica, generazione lista di taglio, calcolo trasmittanza termica, gestione marcatura CE.
Designs rectangular doors/windows, calculates materials lists, performs analytical estimates, generates cutting lists, calculates the heat transmission, manages CE labeling.

LT

In aggiunta alla START: progettazione serramento fuori squadra, collegamento con troncatrici, generazione documenti (DDT e fatture) attivi.
In addition to the features of START: designs doors/windows with intermediate angles, connects to cutting-off machines, and generates credit documents (delivery note and invoices).

STANDARD

In aggiunta alla LT: progettazione serramento ad arco, visualizzazione 3D, funzionamento in rete, gestione lotti di commesse, listini, ordini e magazzino, collegamento con FP WORKSHOP, collegamento con Word, Excel, CAD.
In addition to the features of LT: designs arched doors/windows, displays 3D styles, operates in a network, handles job batches, lists, orders and stock, connects to FP WORKSHOP, connects to Word, Excel, CAD.

EXECUTIVE

In aggiunta alla STANDARD: gestione lavorazioni tramite EASYMAC, collegamento con centri di lavoro e magazzini automatici.
In addition to the features of STANDARD: runs processing operations through EASYMAC, connects to machining centers and automated stocks.

ENTERPRISE

In aggiunta alla EXECUTIVE: collegamento con saldatrici/pulitrici per PVC e con i sistemi di assemblaggio robotizzati; gestione carrelli per pezzi e cornici.
In addition to the features of EXECUTIVE: connects to PVC welding/corner cleaning machines and robotized assembly systems; manages trolleys for workpieces and frames.



emmegisoft.com