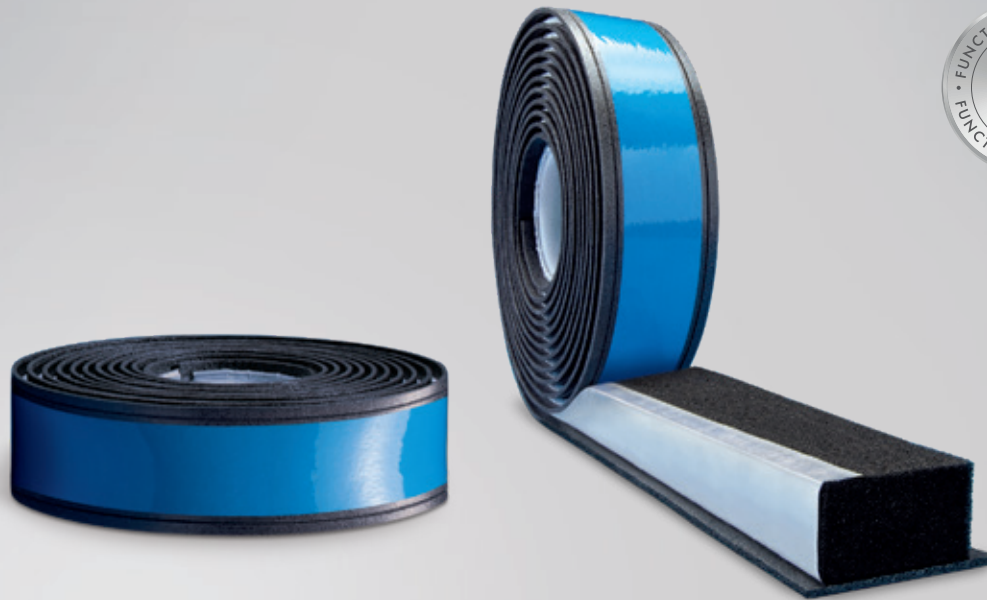


# PRODUCT DATA SHEET

## ISO-BLOCO RENO



### PRODUCT DESCRIPTION

ISO-BLOCO RENO is a multi-functional sealing and insulating system specially developed for energy-related window renovation. It is made up of two connected sealing components. The core layer is made of high-quality polymeric material and provides a smooth surface for the seal. The excellent material component properties guarantee a tight fit in the U-recess which remains after the removal of the old window frame. At the same time as sealing the cavity in the masonry, it forms the basis for the upper sealing layer. The sealing layer is made of impregnated, pre-compressed PUR soft foam with an integrated air tight membrane. The multifunctional material has three distinct areas which combine to achieve the 3-level sealing required by the RAL "installation guide". On the internal side it has an a-value of 0.00, which means it is 100% air tight and acts as a vapour barrier, in the middle area it ensures optimum acoustic and thermal insulation and in the outer area it provides outstanding protection from the weather with a driving rain impermeability of more than 1,050 Pa (Hurricane Forces).

### APPLICATION

ISO-BLOCO RENO is excellent for standard-compliant sealing work done during window renovation / replacement. The sealing system is fitted directly into the U-recess left from the removal of the old window before the new window is installed. The fixing process is by means of flexible sealing flanks. To make fitting easier, the tape has also been made self-adhesive. Where

### PRODUCT ADVANTAGES

- simple and reliable fitting in old buildings
- 3-level seal using only one product
- resistant to driven rain in excess of 1,050 Pa
- complies with the DIN 18542 BG 1 / BGR
- reduces convective heat loss
- clean processing without material residue
- high flexibility and application reliability even with joints of different depths
- can be combined with mastic sealing materials and / or cover strips
- installation independent of temperature and the weather
- no change in tried-and-trusted installation processes required for renovation work
- complies with EnEV requirements and the recommendations of the RAL "installation guide"
- 10 Year Function Warranty\*

\* On the conditions of the manufacturer (available on request).

U-recesses are particularly deep, we recommend to first back-fill the recess with a suitable insulating material. In addition, ISO-BLOCO RENO is compatible with all known building insulating materials.



# ISO-BLOCO RENO

Technical data	Standard	Classification
Material description		impregnated PUR flexible foam with special film
Colour		black
Impermeable to driving rain	DIN EN 1027	$\geq 1,050\text{Pa}$
Temperature stability range	DIN 18542	$-30^{\circ}\text{C}$ to $+80^{\circ}\text{C}$
Classification according to	DIN 18542	BG 1 and BGR
Air permeability coefficient	DIN EN 12114	$\alpha = 0.00\text{m}^3/[\text{h} \cdot \text{m} \cdot (\text{daPa})^0]$
Compatible with adjacent building materials	DIN 18542	requirements fulfilled
Dimension tolerance	DIN 7715 T5 P3	requirements fulfilled
Building material class	DIN 4102	B1 (fire resistant)
Thermal conductivity	DIN EN 12667	$\lambda_{10,\text{tr}} \leq 0.05\text{W}/\text{m} \cdot \text{K}$
U-value: window construction depth 75 mm / 85 mm / 95 mm	DIN 4108-3	$U = 0.7\text{W}/(\text{m}^2 \cdot \text{K}) / 0.6\text{W}/(\text{m}^2 \cdot \text{K}) / 0.55\text{W}/(\text{m}^2 \cdot \text{K})$
Sound reduction		45 dB in 10 mm joint
sd-value gradient (from internal to external)	DIN EN ISO 12572	$\approx 40:1$ (internal $\geq 22$ ; external $\leq 0.5$ )
ETA - 15/0407		CE mark since 2015
Shelf life		1 year, dry and in original packing
Storage temperature		$+1^{\circ}\text{C}$ to $+20^{\circ}\text{C}$

Tape width / area of application	Width of U-recess	Area of application sealing level*	
		BG 1	BG 2
75/6 – 20mm	58 – 74mm		
85/6 – 20mm	68 – 84mm	6 – 20mm	6 – 27mm
95/6 – 20mm	78 – 94mm		
75/8 – 33mm	58 – 74mm		
85/8 – 33mm	68 – 84mm	8 – 33mm	8 – 43mm
95/8 – 33mm	78 – 94mm		

Alternative dimensions available on request.

\* Movement of the components and temporary changes of length of the existing joints should be taken into account when determining the right tape size. Installation depths of the U-recess beyond these areas of application can be reduced using suitable insulation materials.



Installation example: ISO-BLOCO RENO

## SERVICE

- standard delivery ex stock
- commercial and technical consultation

## PACKAGING

pre-compressed rolls

## ACCESSORIES

ISO-TOP FLEX-ADHESIVE PA and ISO-TOP FLEX-ADHESIVE XP