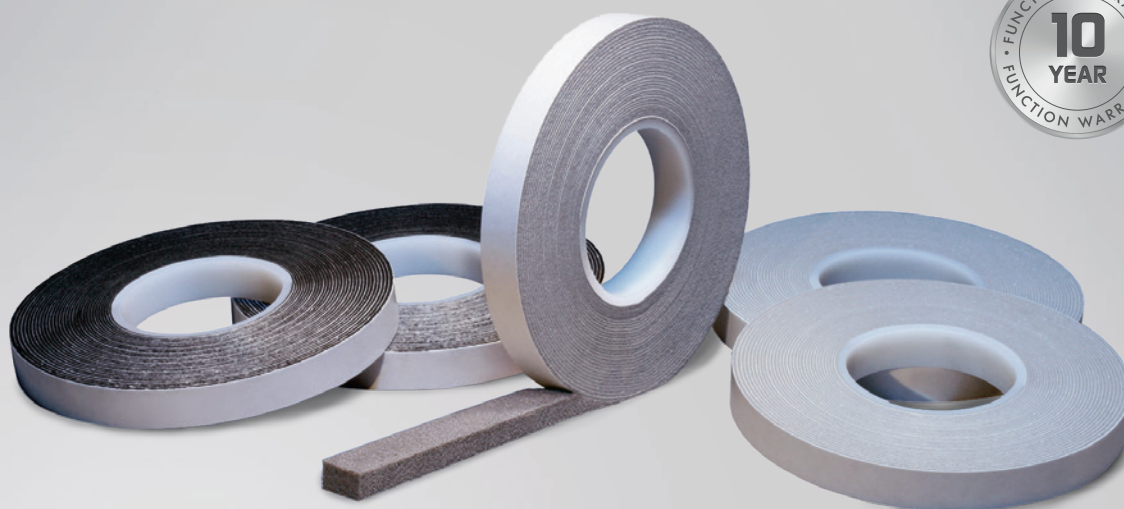


# PRODUCT DATA SHEET

## ISO-BLOCO HF



### PRODUCT DESCRIPTION

ISO-BLOCO HF is an impregnated sealing tape, which under compression, is suitable for thermal and acoustic insulation as well as sealing against drafts and dust.

### APPLICATION

ISO-BLOCO HF can be used between window couplings or in the perimeter joints between assorted building elements. It is also outstanding as thermal insulation in construction joints, as an excellent substitute to conventional can foams. However above all it is characterised for its thermal and acoustic insulating properties.

### SERVICE

- standard sizes available from stock
- private label and / or special labelling available
- non-standard widths available on request
- competent experienced technical support available in the field and by phone

### PACKAGING

pre-compressed rolls with one side self-adhesive (to aid installation) in cardboard cartons

### PRODUCT ADVANTAGES

- particularly ideal as a sealing and insulation layer in conjunction with the ISO<sup>3</sup>-WINDOW SEALING SYSTEM
- permanently elastic, providing a constant high level of acoustic and thermal insulation
- vapour diffusion permeable – breathable
- self-adhesive to aid installation / location
- compatible with all established sealant compounds
- low temperature expansion
- constant quality control to DIN EN ISO 9001 and DIN standards
- complies with the requirements of the Building Energy Act (EnEV was valid 31.10.20) and the recommendations of the RAL "installation guide"
- 10 Year Function Warranty\*

\* On the conditions of the manufacturer (available on request).



Installation example: ISO-BLOCO HF



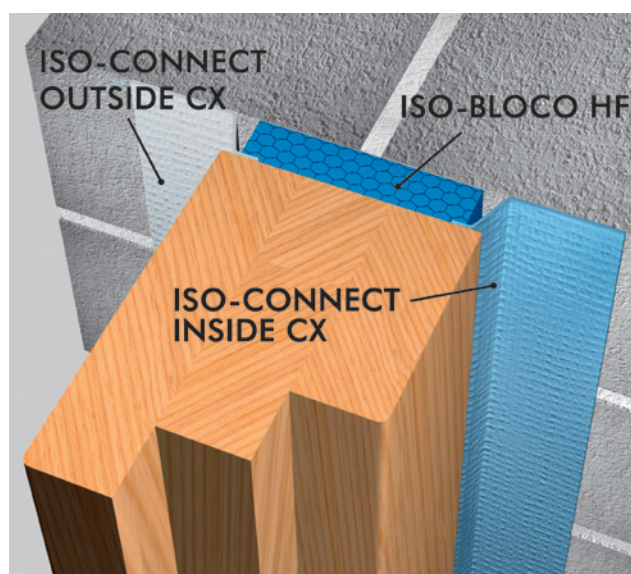
# ISO-BLOCO HF

Technical data	Standard	Classification
Material description		impregnated PUR flexible foam
Impregnant		acrylic with flame retarding additives
Colour		grey, black
Temperature stability range	internal	-40°C to +90°C
Compatibility with adjacent building materials	internal	requirements fulfilled
Dimension tolerance	DIN 7715 T5 P3	requirements fulfilled
Thermal conductivity	DIN EN 12667	$\lambda_{10, tr} \leq 0.046 \text{ W/m}\cdot\text{K}$
Building material class	DIN 4102	B2
Shelf life		1 year, dry and in original packing
Storage temperature		+1°C to +20°C

Tape type	Recommended joint width*	Carton (metres)
10 / 2 mm	2 – 3 mm	375.0
15 / 2 mm		250.0
10 / 3 mm	3 – 5 mm	300.0
15 / 3 mm		200.0
15 / 4 mm	4 – 7 mm	160.0
20 / 4 mm		120.0
15 / 6 mm	6 – 10 mm	112.0
20 / 6 mm		84.0
20 / 8 mm	8 – 13 mm	64.5
25 / 8 mm		51.6
64 / 8 mm		17.2
74 / 8 mm		17.2
20 / 10 mm	10 – 16 mm	49.5
64 / 10 mm		13.2
74 / 10 mm		13.2

Alternative dimensions available on request.

\* Movement in the structure and temporary longitude changes are to be taken into account when determining the max. joint width.



Installation example: ISO<sup>3</sup>-WINDOW SEALING SYSTEM

## SEALING PERFORMANCE

Area of application	Joint width in mm																													
	1	2	3	4	5	6	7	8	9	10	11	12	13	14	15	16	17	18	19	20	21	22	23	24	25	26	27	28	29	30
/ 2		•	•																											
/ 3			•	•	•																									
/ 4				•	•	•	•																							
/ 6						•	•	•	•	•																				
/ 8								•	•	•	•	•	•																	
/ 10										•	•	•	•	•	•	•														

The details and information given in this literature are based on best current knowledge. They are intended to serve as general information only and it is advised that the user conducts their own tests for their specific set of conditions to determine the suitability of the product for its proposed use. No warranty or liability is given or implied regarding any part of these instructions or details, or the completeness of the information. We reserve the right to modify, or change, the specifications and information without advance notification. All goods are supplied subject to our standard conditions of sales, copies of which are available upon request.